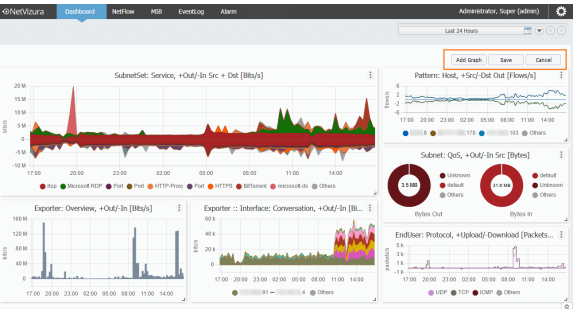


Edit dashboard and a chart

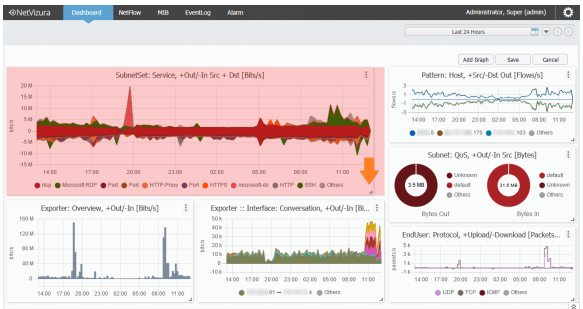
To start editing the dashboard, it is necessary to enter into **Edit dashboard mode**. Click on the vertical ellipsis symbol in the top right corner, and from the provided menu choose the option **Edit**.



Besides the possibility to add graphs, in the Edit mode you can also arrange the dashboard appearance.

To learn more about adding the chart read [How to create a chart \(Add Graph pop-up\)](#).

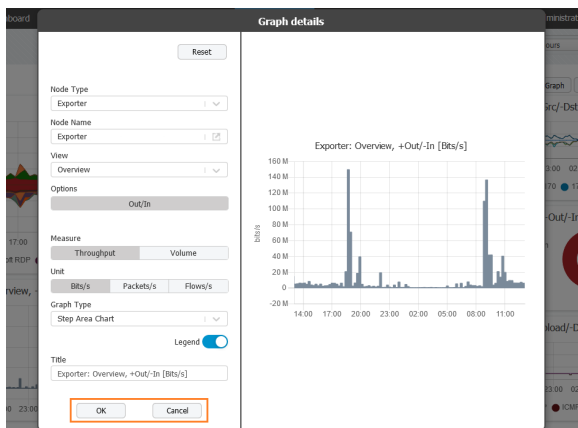
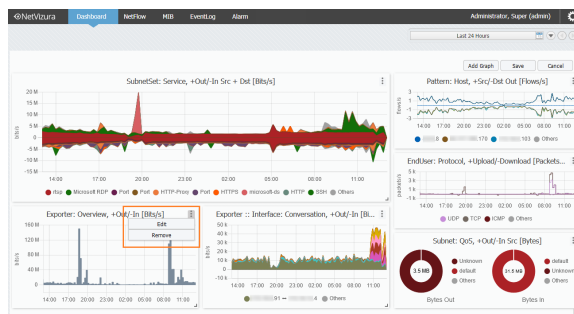
By holding the resize icon in the bottom right corner of the chart, you can **enlarge** and **reduce** the chart size to fit your preference.



In addition to changing the chart size, Edit mode allows you to **move the chart** to different positions on the dashboard. Hold the mouse on the chart, and move it to the desired location. Other charts will realign automatically in accordance with the relocated chart.

Edit chart

While in the Edit dashboard mode, all **alterations of the chart** can also be performed. Click on the vertical ellipsis symbol on the top right corner of the chart. In the newly opened menu, you may pick between Remove and Edit options. If you choose Remove, it will lead to the deletion of the selected graph.



However, if you want to amend the chart, that is done with the Edit option. The aforementioned option will trigger the **Edit Graph pop-up**. All the fields of the pop-up are populated with data of the edited chart. It is possible to change the value of any field, while made alterations are momentarily visible in the Preview field.

Once you are satisfied with entered changes, press the **OK button** in the bottom left corner and an updated chart will be saved on the dashboard. In case you change your mind, the **Cancel button** in the bottom right corner provides the opportunity to undo all the entered amendments.

To learn more about Edit Graph pop-up fields read [Add and Edit Graph pop-up fields](#).

Chart editing is available to you at any given moment, and it is doable by following the procedure described above.



All the amendments made to the dashboard or the chart can only be recorded by selecting the Save option in the top right corner of the dashboard. To reverse the changes of the dashboard and/or chart, press the Cancel button, also placed in the top right corner.