

Inspecting Flow Records (Raw Data)

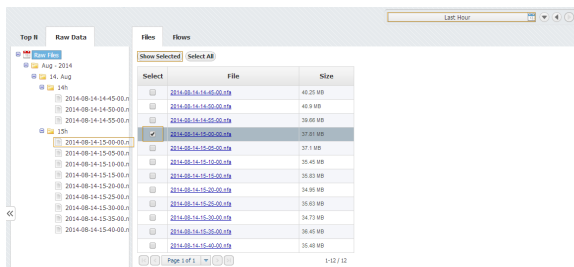
Raw Data files store flow records exported in a 5-minute interval.

Raw Data Tree groups Raw Data files in folders according to day/hour/minute. Selecting a node from the tree allows inspection of specific Raw Data files.

Inspecting Raw Data

To inspect Raw Data:

1. Go To **NetFlow > Raw Data > Files**
2. **Specify time period** in Time Window. The main panel and Raw Data Tree will show gathered files
3. **Select files** you want to inspect from the Main Panel (or alternatively, select a single file from Raw Data Tree)
4. Click **Show Selected**



Raw Data table shows flow records from the selected Raw Data file(s). Data can be filtered, grouped and sorted the by almost any field (source IP address, Bytes, Protocol etc.).

[illegible]

Exporting Raw Data

Raw Data table can be exported as a CSV file in order to present captured netflow records as a report to a third party or for further analysis.

To export Raw Data, click on the the **Export** button in the upper right corner of the Raw Data Table.

Start Time	End Time	Duration	Sec IP	Sec Port	Dist IP	Dist Port	Protocol	ToS
2010-10-04 03:47:04.00	2010-10-04 04:36:50.00	15.00	153	25956	49,254	443	6	
2010-10-04 03:47:04.00	2010-10-04 04:36:50.00	15.00	159	25989	49,254	443	6	
2010-10-04 04:44:30.00	2010-10-04 04:36:50.00	10.20	19	50084	204,90	80	6	
2010-10-04 04:44:30.00	2010-10-04 04:36:50.00	10.20	304,80	0	19	50084	6	
2010-10-04 04:44:30.00	2010-10-04 04:36:50.00	10.20	0	1460	80	54766	6	
2010-10-04 04:47:23.00	2010-10-04 04:37:56.00	30.36	67	36177	196,243	443	6	
2010-10-04 04:47:23.00	2010-10-04 04:37:56.00	30.36	436,263	443	67	36177	6	
2010-10-04 04:47:23.00	2010-10-04 04:37:56.00	30.36	6	64179	196,243	443	6	
2010-10-04 04:39:18.00	2010-10-04 04:42:12.00	27.04	148	57681	268,188	5228	6	
2010-10-04 04:39:18.00	2010-10-04 04:42:12.00	27.04	149	52905	564	1019	6	
2010-10-04 04:39:18.00	2010-10-04 04:42:12.00	27.04	149	52903	564	1019	6	
2010-10-04 04:39:18.00	2010-10-04 04:43:06.00	24.00	13,125	5222	108	49712	6	
2010-10-04 04:39:18.00	2010-10-04 04:43:06.00	24.00	158	49712	13,125	5222	6	
2010-10-04 04:44:04.00	2010-10-04 04:36:50.00	17.14	0	1460	80	54762	6	
2010-10-04 04:44:04.00	2010-10-04 04:36:50.00	17.14	19	54600	246,48	80	6	
2010-10-04 04:44:04.00	2010-10-04 04:36:50.00	17.14	19	54601	246,48	80	6	
2010-10-04 04:44:04.00	2010-10-04 04:36:50.00	17.14	19	54602	246,48	80	6	



Grouping, filtering and sorting the raw data table will affect the CSV as well. This will also make a CSV file much smaller.



Depending on the amount of data, export can last a couple of minutes

Depending on your browser settings, browser may ask you where to save the file or it will save the file to a default folder (usually **Downloads** folder). Some spreadsheet software may ask you which separator to use when opening the file - select **Comma**.