

License Renewal


NetVizura provides two types of Commercial licenses: Perpetual and Yearly license. Perpetual license includes unlimited usage and first year maintenance and support, whereas Subscription license includes one year usage, maintenance and support.

In any case, after your current maintenance and support expires you need to purchase a new license key that allows software update and support tickets. For help with payment requests, get in touch with us at sales@netvizura.com.

For the new license key, you should provide us with your Licence Details.


To send us the Installation Code:

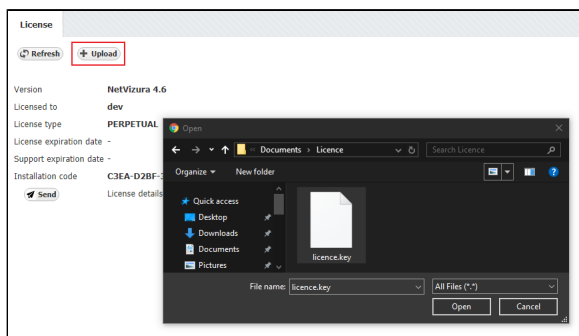
1. Log in as admin
2. Go to  > **Settings > Control Panel > License**
3. Click **Send** to send us an automatically filled out e-mail with your Licence Details



After we receive the Licence Details, we will send you your license key in one working day. Note that you can apply the license key to your existing installation keeping your configuration and data.


To apply your License key:

1. Go to  > **Settings > Control Panel > License**
2. Click **Upload** license key
3. Find the path to the new License key
4. Click **Open**



To prevent hardware mismatch issues, we recommend that you make necessary changes to NetVizura server before applying license key.

After the new license key is loaded a pop-up window will appear prompting you to reset NetVizura (log-out and log-in again). When you log-in again, verify that the new license has been applied by checking **A**

bout or by going to  > **Settings > Control Panel > License**.

Should you experience any difficulties with application of your licence key, do not hesitate to email us at support@netvizura.com.