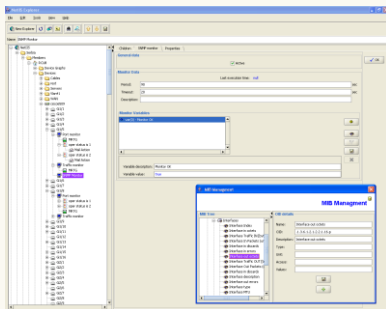
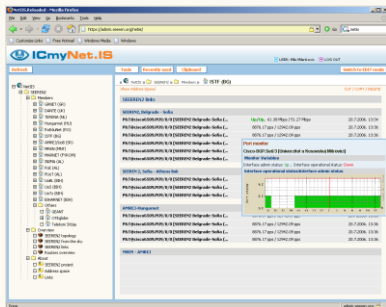
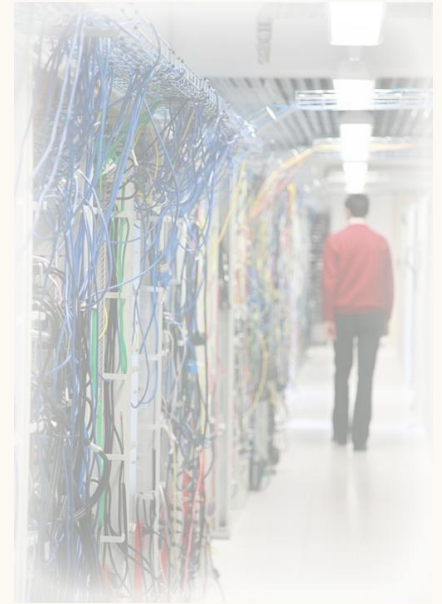




## Network Intelligent Information System

NetIIS is an advanced, efficient, web based network information and monitoring system. The system aims to discover, collect and provide all relevant networking information and help the network administrators in their everyday technical activities. It performs both active and passive monitoring, giving reliable and up-to-date status information regarding the network infrastructure, services and network devices.

Furthermore, a flexible software framework can also be used as a technical knowledge base with various information about the network and networking problems.



### Problem Solving

The system is problem-solving oriented, specially adapted to fit user's needs and to link networking and monitoring information, following logical troubleshooting process.

### Easy and Flexible Access to the System

Typical user access is performed through a standard web interface. It allows database browsing, various views on network information, current status and other details. Since an operational multi-domain network requires interaction with the technical staff, web access also supports instant set-up and data configuration.

However, a standalone Java client application, with an efficient GUI, is more comfortable for advanced system configuration. Java web-start technology assures running an up-to-date executable code stored on the NetIIS server, which simplifies technical maintenance and support in a multi-domain environment. Both types of access are multi-user oriented, with arbitrary read and write permissions over a database hierarchy.

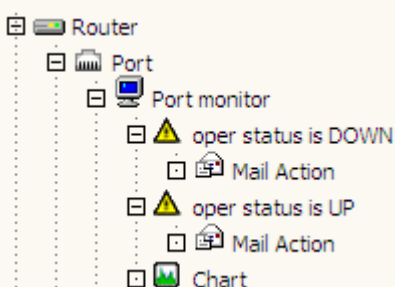
### Multi-user Environment

Defines different users and user-groups, together with privileges for accessing or changing the data, or configuring the system.

### Monitoring

NetIIS is permanently monitoring your network status and different parameters, 24 hours a day, 7 days a week. Monitoring elements can be defined with optimal period, different for every element. Monitor types are:

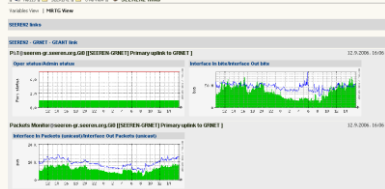
- Port Monitor - monitors link status
- Traffic Monitor - monitors link usage
- Ping Monitor - monitors ping availability of device
- SNMP Monitor - monitors random SNMP variable
- External Monitor - executes user program or script and monitors result
- Nagios Monitor - executes Nagios plug-ins for monitoring services and applications





With SNMP Monitor, the user can easily define different monitors for his own purpose, which can be used as any other monitor (Copy&Paste functions, Alarms Charts...). System provides different predefined monitors for this purpose (CPU Load Monitor, Memory Monitor, Storage Monitor, BGP Monitor...). System also integrates the advanced Syslog Viewer for collecting, searching and viewing syslog messages exported from your network devices and servers.

## Visualizing Data with Charts



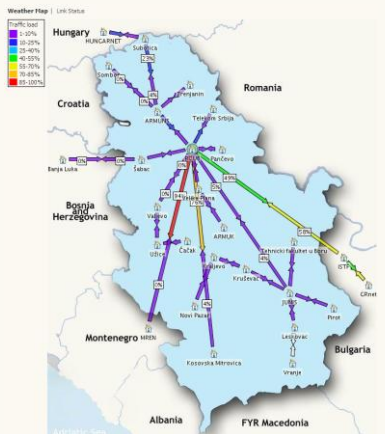
A chart can archive Monitors variable values over time and draw these values in a chosen time interval. Charts can be viewed for a daily, weekly, monthly and yearly interval or any other user defined time period, and are shown in a format similar to traditional MRTG.

## Alarming

Alarms will compare Monitor's value with the user defined thresholds. In the case of criteria fulfillment, active Alarm will be recorded in the Event Log and it can execute a given notification Action. The user can define Alarms in pairs, differentiating them in critical levels ranging from -10 to +10, thus labeling them as "Bad" or "Good". Action is adjoined to certain Alarm and it defines in which way is NetIIS going to react in the case of Alarm activation. There are two types of actions:

- E-Mail Action - sends e-mail messages to a selected user or User groups
- SMS Action - sends SMS messages to a selected user or User groups.

## AutoDiscovery Looks Over Your Network

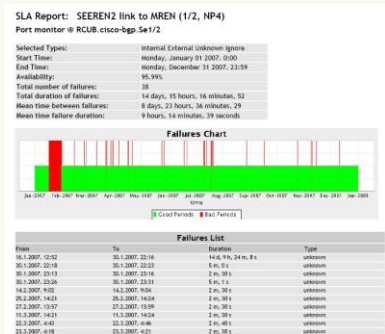


NetIIS aims to help users who manage any large-scale network. Therefore, intelligent AutoDiscovery functions have been developed. This capability enables complex network topologies to be easily translated into equivalent logical forms, with all the relevant technical information: network topology, IP/MAC address, host and port names, SNMP IDs, descriptions etc. Furthermore, in the case of a network change, auto-discovery automatically keeps the information up-to-date without a need for manual reconfiguration, always providing consistent monitoring results.

## Graphical Overview of Network Topology

Network topology and items from the database can be presented graphically, allowing efficient performance monitoring and information access. Essential indicators, such as link utilization, interface name and router characteristics can be easily obtained by either clicking on an object or by simply placing the cursor on the top of a module.

## SLA Reporting



Checks availability and different parameters of your WAN connections or services. NetIIS can generate SLA Reports exported in PDF format for easy printing and email sending to the IT management.

## Tailored to Fit Your Needs

NetIIS is especially built to fit a wide range of user's needs in an efficient and effortless way. It combines the best of commonly used free software and commercial tools: a straightforward usage and its multi-user environment. Additionally, in contrast to all of these toolsets, NetIIS contains a modern networking information system, able to customize and organize all the necessary technical data.

