

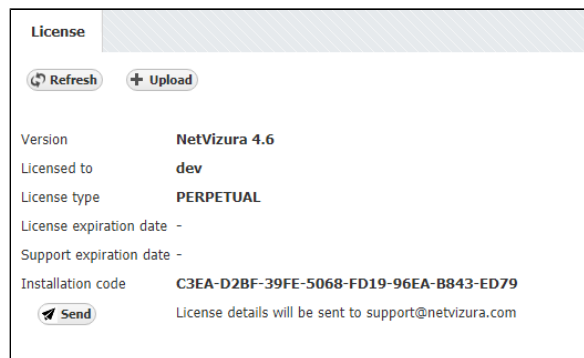
License Upgrade

To upgrade your current licence (Free Trial to Commercial or lower to higher Commercial) you need to purchase appropriate Commercial license. For help with finding an optimal license for you, complete this [Get Quote](#) form on our web site or get in touch with us at sales@netvizura.com.

After this, you should provide us with the Installation Code for your NetVizura server so we can issue you a license key.

To send us the Installation Code:

1. Log in as admin
2. Go to [blocked URL](#) > **Settings** > **Control Panel** > **License**
3. Click **Send** to send us an automatically filled out e-mail with your Licence Details



The screenshot shows the 'License' section of the NetVizura interface. It includes a 'Refresh' button and an 'Upload' button. The current license details are as follows:

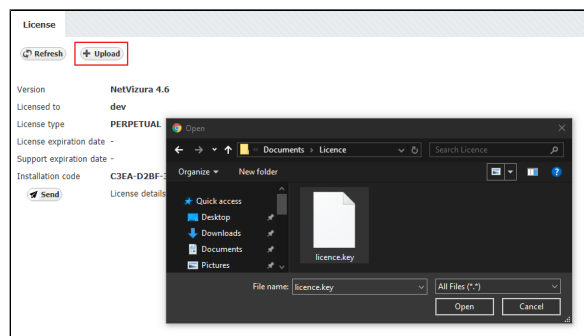
Field	Value
Version	NetVizura 4.6
Licensed to	dev
License type	PERPETUAL
License expiration date	-
Support expiration date	-
Installation code	C3EA-D2BF-39FE-5068-FD19-96EA-B843-ED79

Below the details is a 'Send' button and a note: 'License details will be sent to support@netvizura.com'.

After we receive the Licence Details, we will send you your license key in one working day. Note that you can apply the license key to your existing installation keeping your configuration and data.

To apply your License key:

1. Go to [blocked URL](#) > **Settings** > **Control Panel** > **License**
2. Click **Upload** license key
3. Find the path to the new License key
4. Click **Open**



After the new license key is loaded a pop-up window will appear prompting you to reset NetVizura (log-out and log-in again). When you log-in again, verify that the new license has been applied by checking **About** or by going to [blocked URL](#) > **Settings** > **Control Panel** > **License**.

Should you experience any difficulties with application of your licence key, do not hesitate to email us at support@netvizura.com.

✓ If you are upgrading NetFlow Analyzer to a higher Commercial license, first you need to estimate how many flows you need. For more instruction go to [How to estimate NetFlow Analyzer license](#)

✓ To prevent hardware mismatch issues, we recommend that you make all necessary changes to NetVizura server before applying license key.